

Friday's Maths Sheet

Practise Maths

1 Complete the subtractions.

Use the bar models to help you.

a)



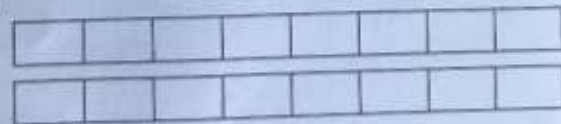
$$1\frac{5}{8} - 1\frac{1}{2} = \boxed{}$$

b)



$$1\frac{7}{8} - 1\frac{3}{4} = \boxed{}$$

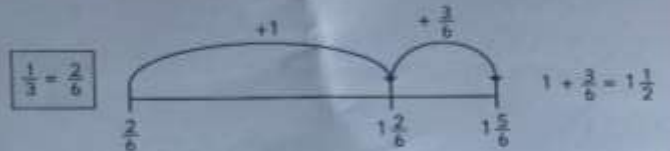
c)



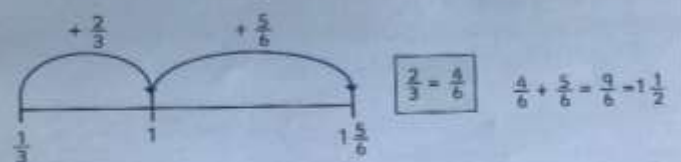
$$1\frac{1}{2} - 1\frac{1}{8} = \boxed{}$$

2 Dexter and Whitney are using number lines to work out $1\frac{5}{6} - \frac{1}{3}$

Dexter's method



Whitney's method



What is the same and what is different about these methods?

Use one of the methods to work out $1\frac{5}{8} - \frac{3}{16}$



$$1\frac{5}{8} - \frac{3}{16} = \boxed{}$$

Problem Solving



3 Complete the subtractions.

a) $3\frac{1}{4} - \frac{5}{24} = \boxed{}$

d) $7\frac{5}{6} - \frac{13}{24} = \boxed{}$

b) $3\frac{3}{16} - \frac{1}{8} = \boxed{}$

e) $4\frac{4}{9} - \frac{4}{27} = \boxed{}$

c) $2\frac{5}{6} - \frac{2}{3} = \boxed{}$

f) $6\frac{11}{12} - \frac{3}{4} = \boxed{}$

4 A jug contains $1\frac{3}{5}$ litres of orange juice.

Eva pours $\frac{4}{15}$ litres into a glass.



How much orange juice is left in the jug?

There are litres of orange juice left in the jug.