




Topic Remote Education		
This Week's Topic Lessons		WC: 11/01/21
Day:	Subject:	Lesson:
Monday	Geography – to be able to identify places in our local area (from an aerial photo).	<ul style="list-style-type: none"> What would you see if you flew over our local area? Look at the aerial picture (one that is taken from an aeroplane) of Kendal. Can you spot any features or places that you know? Label the photo. Go on a walk and take a photo of (some of) these places. Add them to your aerial photo to show what they look like on the ground.
Tuesday	PE Computing – to be able to use directional language	<ul style="list-style-type: none"> Complete Mr Harris's PE challenge. You are going to practise using words for giving direction commands. You will use Forwards, Backwards, Left and Right. Make a very simple obstacle course / maze on the carpet. Give instructions to someone in your family to guide a teddy from one end of the course to the other. You can only use the commands <i>Forwards, Backwards, Left and Right</i>. Make command cards with the direction words. Change the course. Can you set the command cards out in the correct sequence to get the teddy through the course? (This is an algorithm – a set of instructions) Now 'run' (follow) your algorithm. Did it work? If not, where did it go wrong? Can you make it work correctly? Take a photo of your algorithm along with your obstacle course. Post it to Seesaw.



Wednesday	RE – to be able to describe the meaning of a Christian symbol.	<ul style="list-style-type: none"> • What is a religious symbol? Read the Christian symbols information. • Draw one thing that is a symbol for Christians. • Write a sentence describing what the symbol makes Christians think about.
Thursday	Science – to be able to identify different materials.	<ul style="list-style-type: none"> • What do you already know about materials? Make a list of all of the materials that you can think of. • What material is it made from? Go on a material treasure hunt. Can you find things around your home that are made from the different materials in your list? Take a photo and label where the material is on the object. <p>E.g. Glass door</p> 
Friday	PE DT	<ul style="list-style-type: none"> • Complete Mr Harris's PE challenge. • Imagine that you are one of the three little pigs. You are investigating if cardboard can make a strong structure. Your challenge is to make a rectangular framed structure out of folded card. It must be able to stand by itself. • What is the best way to join the card together? Can you make it more stable by adding extra parts. • You could also explore making hinges, scoring and bending card. • What have you found out? How can you make your cardboard structure as strong and stable as possible?

LO: to identify places in our local area

What could you see if you flew over Kendal?



Can you find:

- the river
- a wood
- a bridge
- the castle
- our school (it's in a big field, next to a wood)
- your house
- anywhere else you know

The background of the slide is a photograph of a baptismal font. The font is made of grey stone and is filled with water. In the center of the font, the word "CHRIST" is spelled out using dark grey, rectangular stones. The water is decorated with several bright pink daisy-like flowers. On the left side of the font, there are white and pink roses. The font is set against a dark background.

Christian Symbols

A teaching and task setting power point for Key Stage 1

Learning Objective

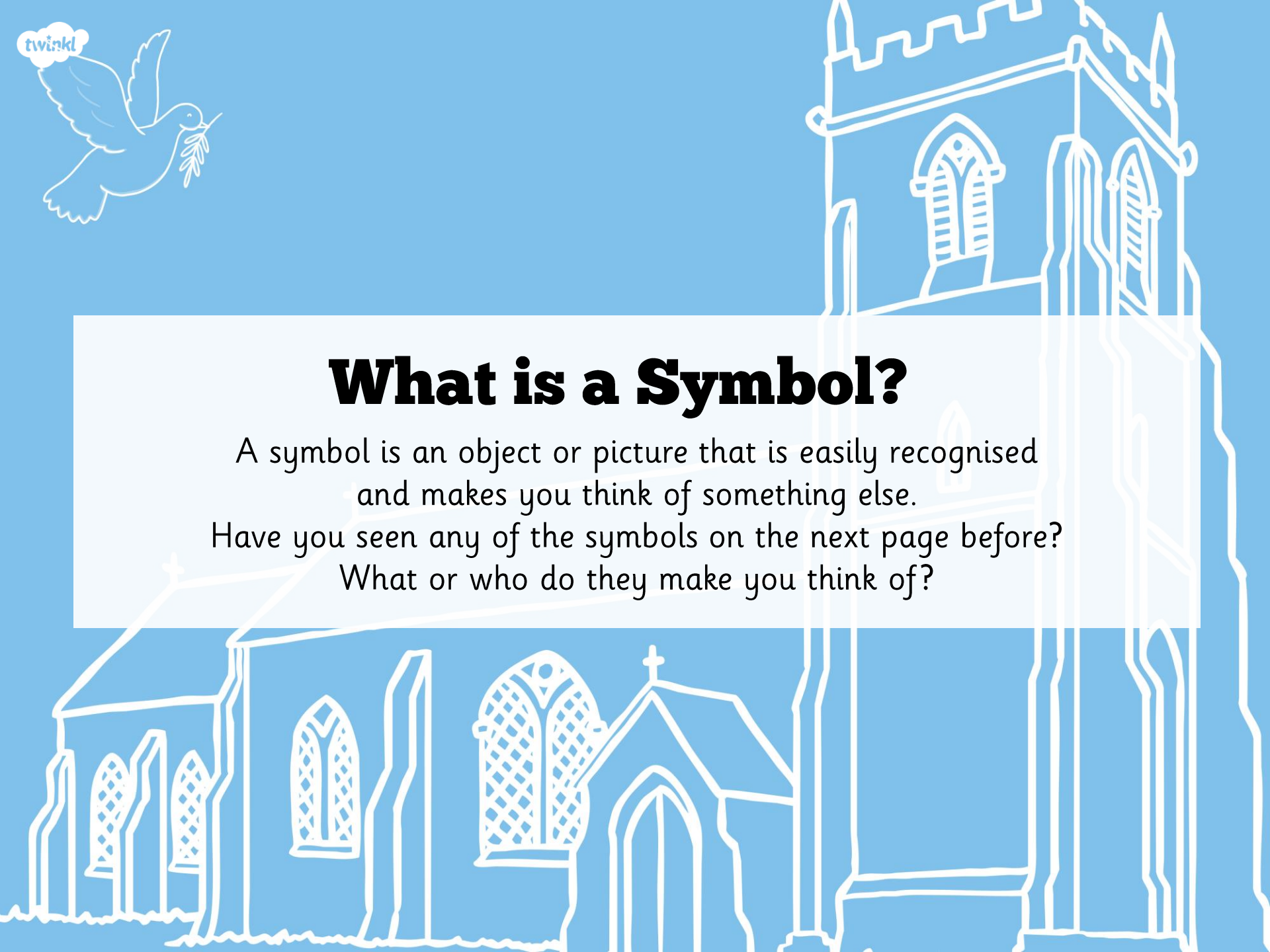
- To find out about what symbols are.
- To understand that some symbols belong to religions.



What is a Symbol?

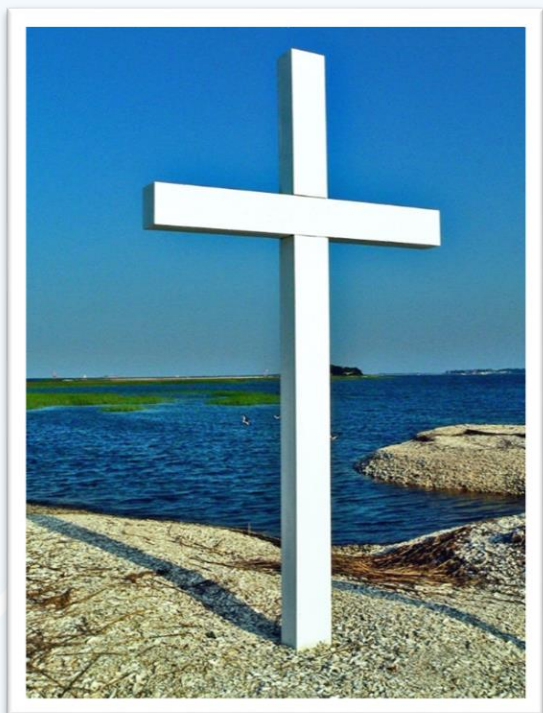
A symbol is an object or picture that is easily recognised and makes you think of something else.

Have you seen any of the symbols on the next page before?
What or who do they make you think of?





Christian Symbols



The **cross** stands for Jesus' death because he died on a cross.



The **fish** was a secret sign used by people a long time ago to show that they believed in Jesus. Today, you might still see it!

Christian Symbols



The **candle flame** is another symbol as Jesus is known as the light of the world to Christians. It is seen as a symbol of hope in dark times.



Christian Symbols



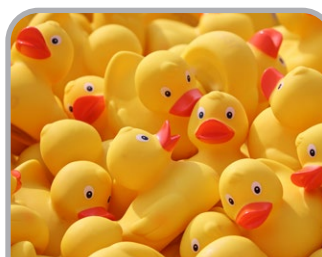
What do you think the dove is a symbol of?

Key Vocabulary

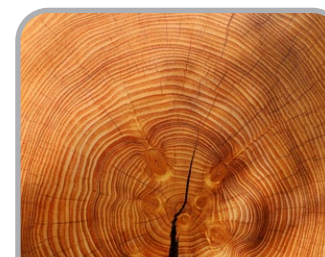
object	A thing that can be used. For example a door, chair, car, table are all objects .
material	Materials are what an object is made from.
hard	Not easily broken or bent.
soft	If something is soft , it is easy to cut, fold or change the shape of.
stretchy	Can be pulled to make it longer or wider without breaking.
shiny	Reflects light easily.
dull	Doesn't reflect light. Doesn't look bright or shiny .
rough	If something is rough , it feels and looks uneven or bumpy.

Key Knowledge

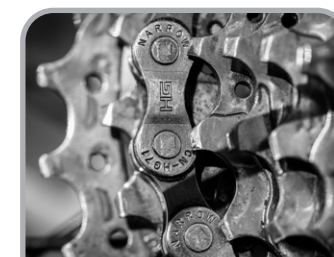
Materials:



plastic



wood



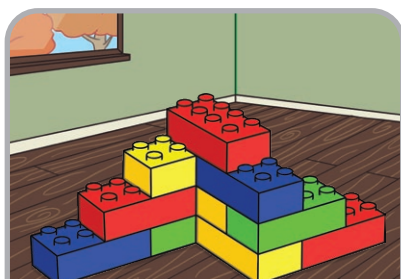
metal



water



glass



plastic toys



wooden furniture



metal tools



drinking water



glass window

To look at all the planning resources linked to the Everyday Materials unit, [click here](#).

Key Vocabulary

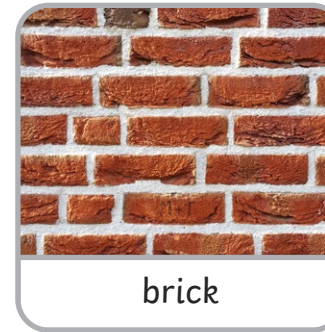
smooth	Smooth objects have no lumps or bumps.
bendy	Bendy things can be folded easily.
not bendy	If something is not bendy , it can't be folded easily.
waterproof	If something is waterproof , it keeps water out. It keeps things dry.
not waterproof	Not waterproof materials let water in.
absorbent	If something is absorbent , it soaks water up.
not absorbent	If something is not absorbent , it does not soak up water.
transparent	Transparent objects can be seen through.
opaque	Opaque objects can't be seen through.

Key Knowledge

Materials:



paper



brick



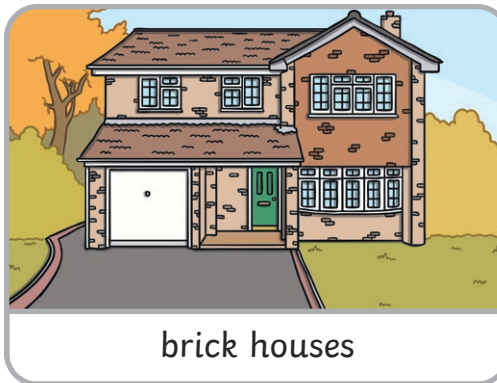
fabric



stone



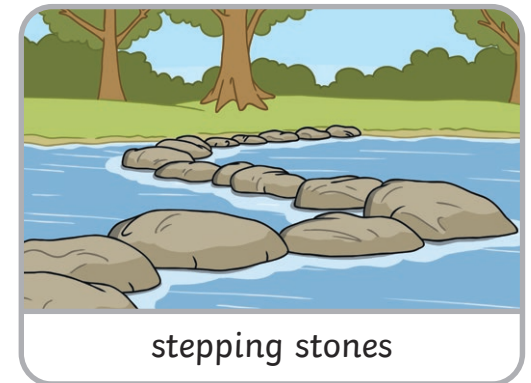
paper books



brick houses



fabric clothing



stepping stones