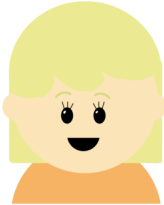


Coach Confusion - Price List

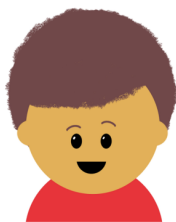
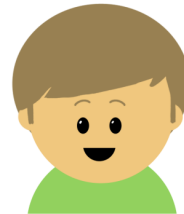


Coach Confusion - Problems



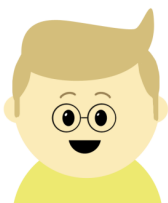
I need to travel from Southampton to
Edinburgh.
What coach route will be the best price?

Tomorrow, I have a business meeting in
Manchester but I live in Plymouth.
Plan a route to my destination that will
save me the most money!



Help! How should I get from Plymouth to
Norwich?
Which route offers the lowest cost?

I need to travel from Norwich to Newcastle.
However, the Norwich to Nottingham service
is not running today due to roadworks.
Which is the cheapest route for me to take?



Zippy Travel needs to inspect all of the bus
stations which their services run from.
Plan a route for the director to visit all of
the coach stations for the smallest expense.



Coach Confusion - Reasoning

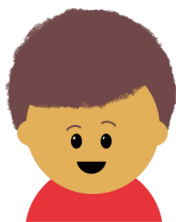
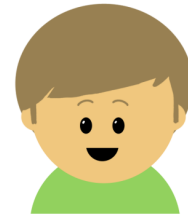


When travelling from Birmingham to Edinburgh, there is only one route which offers the lowest fare.

Do you agree with Jane? Explain why!

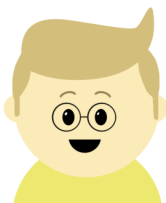
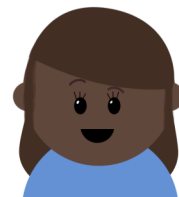
If I lived in Norwich, it is not cost-effective to travel anywhere via London.

Prove why Jerry's statement is correct!



Describe all of the logical routes you could select to travel from Norwich to Plymouth regardless of the price.

What is the same and what is different when you compare the cheapest routes from Newcastle to London, and Edinburgh to London?



A £20 baggage fee is to be introduced on Zippy Travel journeys with more than one change.

Will this always, sometimes or never affect the cheapest routes that customers usually take?

