

The background is a vibrant cartoon illustration of a garden. A light-colored path leads from the bottom center towards the background. On the left, there are green bushes and purple flowers. On the right, there are green bushes and a small stream. In the background, there are large green trees and a blue sky with white clouds. The title text is centered over this scene.

# **Punctuating Simple Sentences**

# 1

## Statements

Statements are sentences which tell you a fact, opinion or idea.  
They begin with a capital letter and usually end with a full stop.

*Example:*

A rainbow has 7 colours.  
They are beautiful to look at.



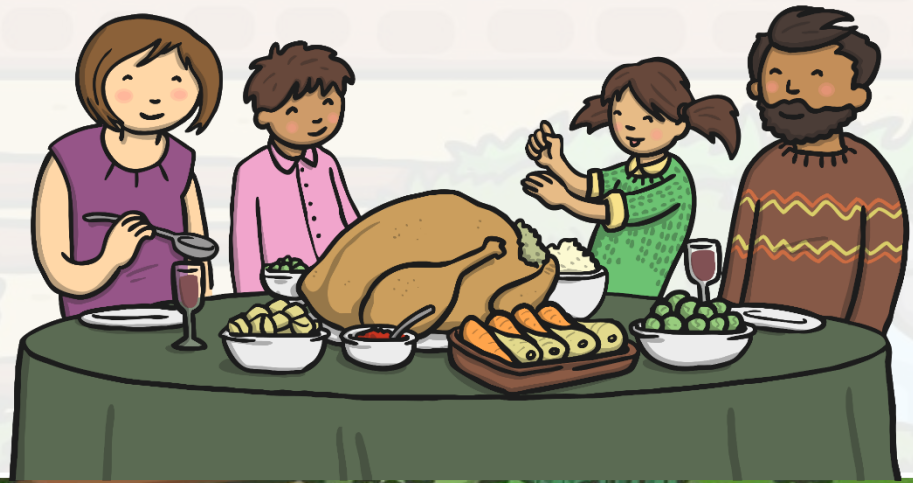
## 2

# Questions

Questions are sentences that ask you something.

They begin with a capital letter and a question word (who, what, where, when, why, how). They end with a question mark.

*Example:*  
What did you have for dinner?



# 3

## Exclamations

Exclamations are sentences that state something with strong feeling or emotion. An exclamation is used when someone is shouting or surprised.

They can start with 'How' or 'What' and end in an exclamation mark.

*Example:*  
What big feet you have!





# 4

## Commands

Commands give someone an instruction or tell people what to do. They can be urgent or angry, can be very short and contain a 'bossy verb'.

They can end with a full stop or exclamation mark.

*Example:*  
Help me! Stop it.



# Can you match the sentence with the correct sentence type?

Sentence	Type of Sentence
It is a beautiful day.	
Where should we have our picnic?	
Take the sandwiches out of the lunch box.	
What a mess we have made!	

**statement**

**question**

**command**

**exclamation**

# Can you match the sentence with the correct sentence type? – **ANSWERS!**

Sentence	Type of Sentence
It is a beautiful day.	<b>statement</b>
Where should we have our picnic?	<b>question</b>
Take the sandwiches out of the lunch box.	<b>command</b>
What a mess we have made!	<b>exclamation</b>

# Sentence Type Sorting

Oh no, these aliens have got lost in space! Can you help them to get back to their home planets? Each planet is a different sentence type. Read the alien's sentences to work out where they live.

My eye is huge.



Bow down before me, weak humans!



What pointy ears I have!



Will I be home in time for tea?

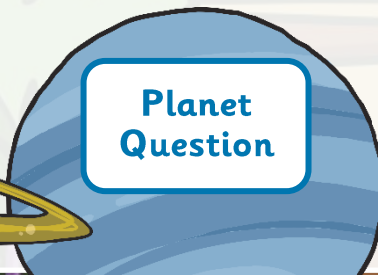


**Planet Command**

**Planet Question**

**Planet Statement**

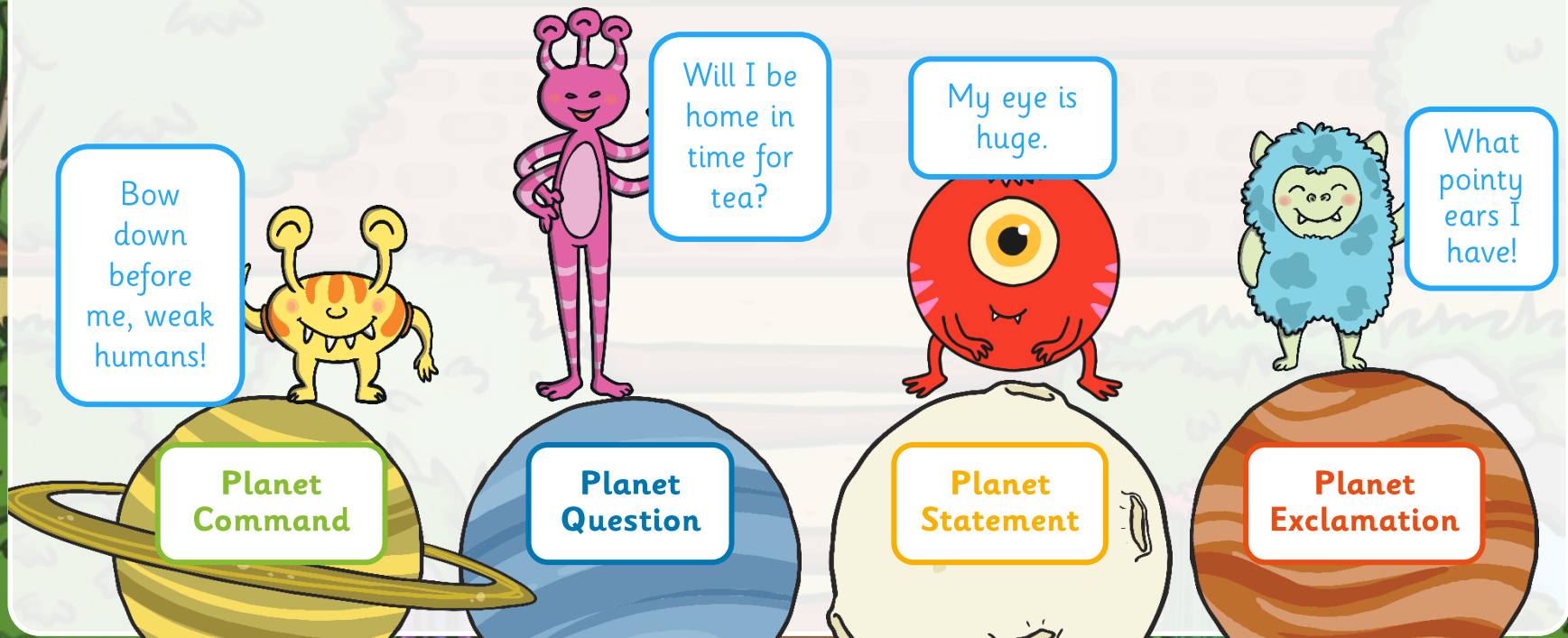
**Planet Exclamation**





# Sentence Type Sorting – ANSWERS!

Note the command sentence ends in an exclamation mark because it is being said with force!



# Capital Letters

Some **capital letters** are missing from this newspaper report! Can you spot where the capital letters should be and why?

## dINOSAUR ON TOUR!

have you ever visited London?  
then you might have seen one of  
the biggest and most popular  
members of the Natural History  
Museum.

dippy, the enormous diplodocus  
skeleton, has been at the museum  
since 1905. now some other  
museums are going to have a turn  
to look after him. the real  
diplodocus skeleton was found in  
america in 1898 and put on

display there. King edward VII saw  
a drawing of it and he asked to  
have a model of the skeleton built  
for the Natural History Museum.



# Capital Letters – ANSWERS!

There were capital letters missing from the start of sentences and also for proper nouns:

## DINOSAUR ON TOUR!

Have you ever visited London? Then you might have seen one of the biggest and most popular members of the Natural History Museum.

Dippy, the enormous diplodocus skeleton, has been at the museum since 1905. Now some other museums are going to have a turn to look after him. the real diplodocus skeleton was found in America in 1898 and put on

display there. King Edward VII saw a drawing of it and he asked to have a model of the skeleton built for the Natural History Museum.

