

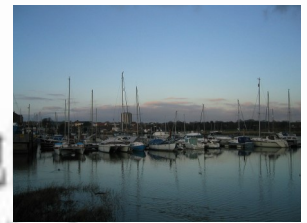
## Geography - Volcanoes—journey of lava and Earthquakes

Michael's journey and ultimate incredible adventure begins in Fareham, Southampton in England.

**Task 1:** Look carefully at the map showing their planned route. Using **Planet Earth \_ A Fact File** make a sketch of their route and then try to overlay in a different colour the tectonic plates they will cross and be near as they travel around the world.

**Task 2:** Have a look at [http://news.bbc.co.uk/cbbcnews/hi/find\\_out/guides/tech/volcanoes/newsid\\_1768000/1768622.stm](http://news.bbc.co.uk/cbbcnews/hi/find_out/guides/tech/volcanoes/newsid_1768000/1768622.stm)

**Task 3:** Having read the **Planet Earth\_ A fact File** and been on the **CBBC Site**, in your workbook, make some key facts about the impact a volcano would have on a community. Maybe you could create a sketch surrounded by facts or a volcano quiz!

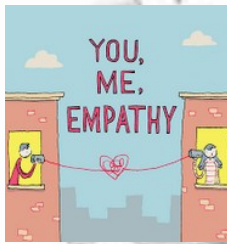


Fareham, Near Southampton.



## PSHE – Empathy

Michael's mum and dad have lost their jobs in Kensuke's Kingdom, many people are separated from their families and friends at the moment. We need to show empathy for those who are not feeling well or are upset by the all the changes happening due to Coronavirus. So what is empathy?



**Task 1:** Read **Prettier than Freckles**, then complete the task.

**Task 2:** Read **What is Empathy?** Then

## Science—What makes a living thing?

Think back to what you know about 'Basic Needs'

**Task 1:** Read **MRS NERG 2**

**Task 2:** See: **What is it?**

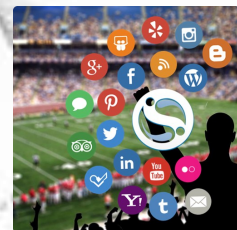
Meet Mrs Nerg...



## Computing – Media

Sport is reported in the Media through computing all over the world instantly, so results and replays can be seen and shared very quickly.

Have a read of: **Computing and Sport and Positive and Negative**, then complete the **TASKS**.



WC: 8/6/20

Year 4  
Journeys

## R.E.

What do places of worship teach us about religion?

Last weeks links gave three types of places of worship.

Read **Places of Worship**. Then complete the task.